

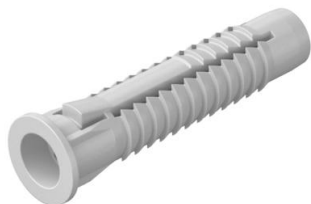
# Technical data sheet

## Universal anchor

Item number: 2347582



Also suitable as a cavity anchor, with collars to prevent slipping. 3 tabs take up the torque.  
Required minimum bolt length = anchor length + component thickness + 1 x bolt Ø.  
Withdrawal force applies to wood screws of the largest bolt diameter in concrete of class B25.  
Our safety value recommendation: 5x

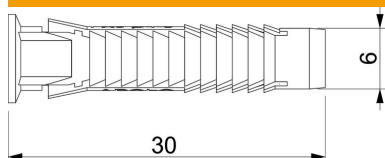


PE Polyethylene

### Master data

Item number	2347582
Type	910 FX 6x30
Description 1	Universal anchor
Available from	01.05.2020
Manufacturer	OBO
Dimension	6x30
Colour	Light grey
Material	Polyethylene
Smallest sales unit	100
Unit of quantity	Piece
Weight	0.065 kg
Weight unit	kg/100 pc.

### Dimensions



Length	30 mm
Dimension D	6 mm
Dimension L	30 mm

# Technical data sheet

## Universal anchor

Item number: 2347582



### Technical data

Version for	Universal anchor
Pull-out value	470 N
Concrete Frat	470
Drill hole diameter, min.	6 mm
Suitable for fastening with cable ties	no
Suitable for gas concrete	no
Suitable for hexagonal wood screw	yes
Hollow brick Hlz12 Frat	200
Wood screws	3,5-5
Porous calcareous sandstone KSL12 Fempf.	390
Solid calcareous sandstone KSL12 Frat	420
With edge	yes
With bolts	no
Porous concrete P2 Fempf.	50
Porous concrete P4 Fempf.	100
Full brick Mz12 Frat	420