

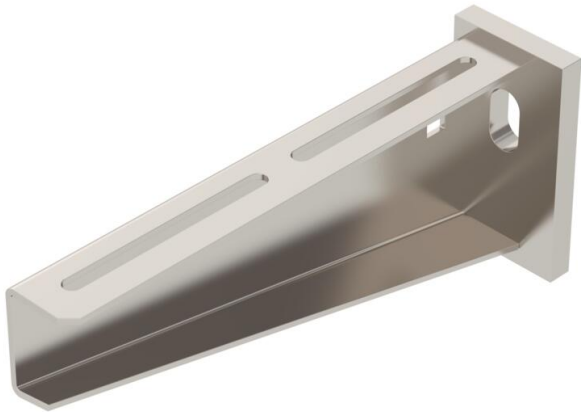
Technical data sheet

Wall and support bracket AW 55 A2

Item number: 6443063



Heavy-duty wall and support bracket with welded head plate.
Fastening of the bracket to the U support of width 400 mm or greater using a hexagonal bolt through both sides of the support. Please insert suitable spacers.



A2 Stainless steel

2B Bright, treated

Master data

| | |
|---------------------|--------------------------|
| Item number | 6443063 |
| Type | AW 55 21 A2 |
| Description 1 | Wall and support bracket |
| Description 2 | with welded head plate |
| Manufacturer | OBO |
| Dimension | B210mm |
| Material | Stainless steel |
| Surface | Bright, treated |
| Surface standard | |
| Smallest sales unit | 1 |
| Unit of quantity | Piece |
| Weight | 77 kg |
| Weight unit | kg/100 pc. |

Dimensions

| | |
|-------------|--------|
| Length | 50 mm |
| Width | 210 mm |
| Height | 90 mm |
| Dimension A | 50 mm |
| Dimension B | 210 mm |
| Dimension H | 90 mm |

Technical data sheet

Wall and support bracket AW 55 A2

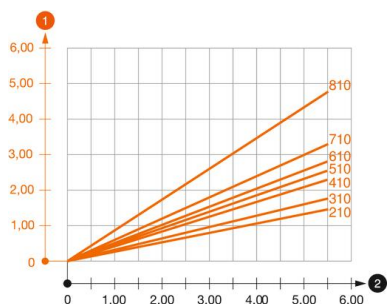
Item number: 6443063



Technical data

| | |
|-------------------------------|--------------------------|
| Version for | Wall and support bracket |
| F in kN | 5.5 kN |
| Maintain electrical functions | no |
| Hole diameter | 13.5 mm |
| Rustproof steel, pickled | yes |
| Angle range, max. | 90 mm |
| Angle range, min. | 90 mm |

Loads



Load diagram, bracket, type AW 55

- 1** Bending of the bracket tip at permitted bracket load
- 2** Permitted bracket load in kN without man load
- Load curve with bracket lengths in mm

Characteristic anchor load values for wall and support bracket AW 55

| Wall fastening | Max. load [kN] | | | | | | | | | |
|-----------------|--------------------|------|------|------|------|------|------|------|------|------|
| | Bracket width [mm] | | | | | | | | | |
| Anchor type | 210 | 310 | 410 | 510 | 560 | 610 | 710 | 810 | 910 | 1010 |
| BZ3 12x110/0-35 | 3.92 | 3.83 | 3.79 | 3.46 | 3.30 | 3.30 | 3.15 | 2.53 | 2.38 | 2.23 |

Die angegebenen Werte basieren auf ungerissenen Beton der Festigkeitsklasse C20/25. Die Einbaubedingungen der ETA-Zulassung (Dübel) sind zu beachten!