

Technical data sheet

Connection sleeve

Item number: 6410103



Connection sleeve with continuous internal thread.



St Steel

G Electrogalvanized

Master data

Item number	6410103
Type	CSTR M10 G
Description 1	Connection sleeve
Description 2	for threaded rod
Manufacturer	OBO
Dimension	M10x30mm
Material	Steel
Surface	Electrogalvanized
Surface standard	EN ISO 19598 / EN ISO 4042
Smallest sales unit	50
Unit of quantity	Piece
Weight	4.15 kg
Weight unit	kg/100 pc.

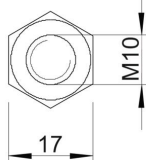
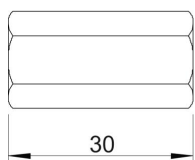
Technical data sheet

Connection sleeve

Item number: 6410103



Dimensions



Length	30 mm
Dimension 1, metric	10
Dimension 2, metric	10
Dimension L	1.57 in
Dimension L	30 mm

Technical data

Continuous thread	yes
Shape	Hexagonal
Thread	M10
WAF	17
Hexagonal	yes