

# Technical data sheet

## Centre suspension mesh cable tray A4

Item number: 6015245



Two-part centre suspension of mesh cable trays.  
When filling with cables, please ensure an even distribution. The maximum recommended mesh cable tray width is 200 mm.



A4 Stainless steel

### Master data

Item number	6015245
Description 1	Centre suspension
Description 2	for threaded rod M8
Manufacturer	OBO
Dimension	60x40
Material	Stainless steel
Smallest sales unit	25
Unit of quantity	Piece
Weight	8.3 kg
Weight unit	kg/100 pc.

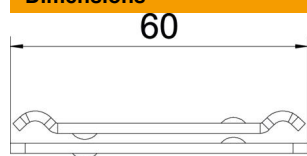
# Technical data sheet

## Centre suspension mesh cable tray A4

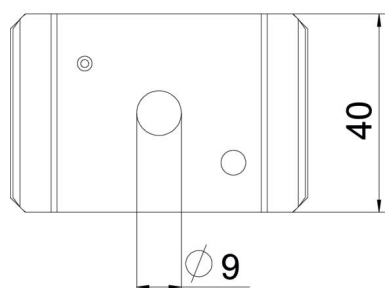
Item number: 6015245



### Dimensions



Length	65 mm
Width	40 mm
Height	10.1 mm



### Technical data

Version for	Suspended
Maintain electrical functions	no
Hole diameter	9 mm
Adjustable	no