

Technical data sheet

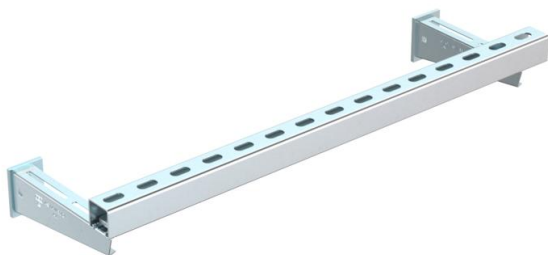
Support construction for insulations, with bracket

Item number: 7202436



Suspension and fastening material, made of steel, to create the first support of pass-through installations in fire insulation. Mounting of the bracket on the wall, support of the installation using mounting rail.

The maximum distance of the mounting rail to the wall of 200 mm fulfils the requirements of most insulation systems.
Including 2x MMS-plus 10 x 80



St Steel

Master data

Item number	7202436
Type	SKA 05 VZ
Description 1	Supporting structure bracket
Description 2	set for insulation
Manufacturer	OBO
Dimension	500mm
Material	Steel
Smallest sales unit	1
Unit of quantity	Piece
Weight	190.74 kg
Weight unit	kg/100 pc.

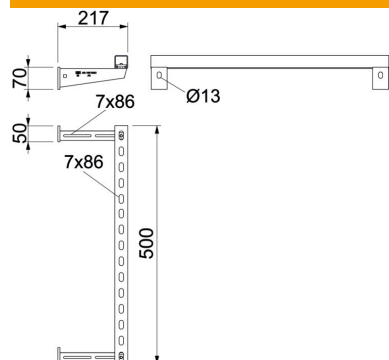
Technical data sheet

Support construction for insulations, with bracket

Item number: 7202436



Dimensions



Dimension A	50 mm
Dimension B	217 mm
Dimension H	70 mm

Technical data

Type of accessory	Miscellaneous
-------------------	---------------